

LESSON



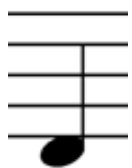
*Find all of the
twins on your
instrument*

THE NEW NOTE D IS BETWEEN THE TWINS



Find and play all the D's using right and left hands.

Then color them.



**THE NOTE D LIVES HIGHER
THAN C
BUT LOWER THAN E**



NEW NOTE D

1 2 3 3 2 3

I am play-ing eve-ry day, New note D. E D C.

1 2

I am so good, look at me, New note D. C E C

*Play this song 3 times. Count, sing the name of the note as you play, and then sing with words.
After that, close your eyes and play with your eyes closed.*

MUSIC NOTES MAY MOVE

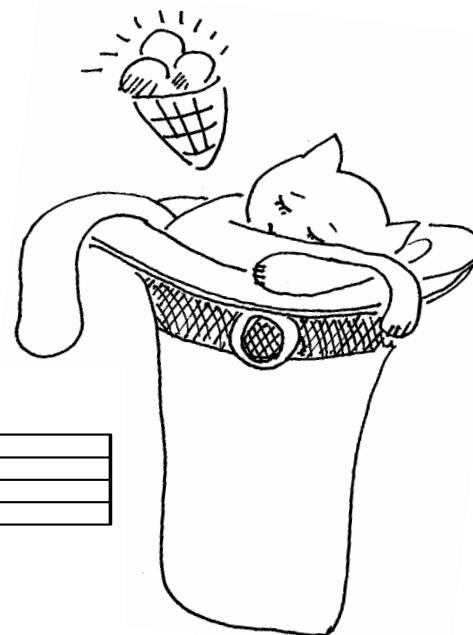
UP

DOWN

OR THEY ARE REPEATED

Look at the song and draw arrows in the boxes above, to show the UP, DOWN or REPEATED movement.

LITTLE CAT



3 2 3 2

Lit-tle cat sleeps in the hat, Sleep well cat.

3 2 2

In the dream he sees ice cream. What a dream!

A WHITE NOTE WITHOUT A STEM IS CALLED A WHOLE NOTE.

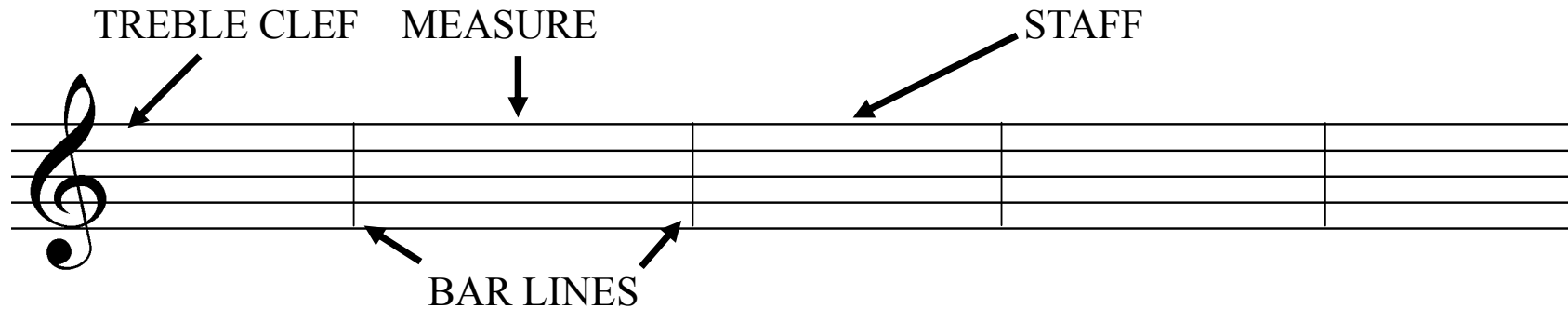
(IT SHOULD BE HELD FOR 4 COUNTS) $\bigcirc = \text{♪} + \text{♪} = \text{♪} + \text{♪} + \text{♪} + \text{♪}$

A STAFF is 5 horizontal lines and 4 spaces. On the Staff we place notes.

A TREBLE CLEF is the sign at the beginning of the Staff.

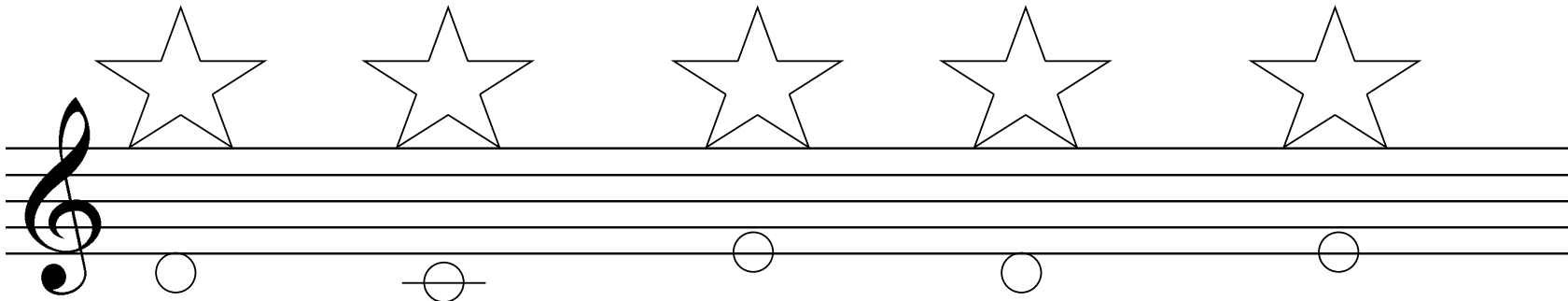
Music is divided into equal parts by vertical lines. These are called BAR LINES

A MEASURE is the section between two Bar Lines.

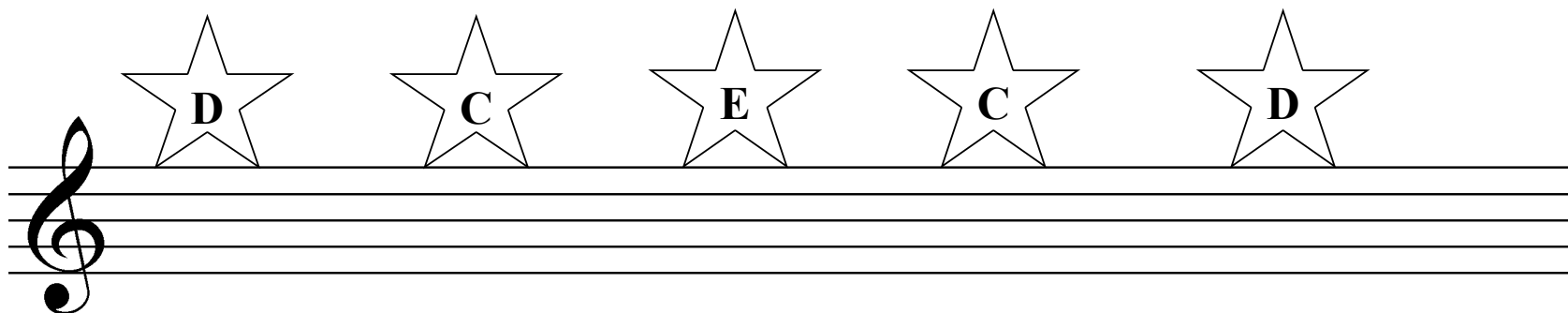


TEST

Write the names of the notes in the stars



Draw the notes under the stars



Now solve the problem. Add the number of beats below.

$$W+H+Q=$$

$$H+H+Q+H=$$

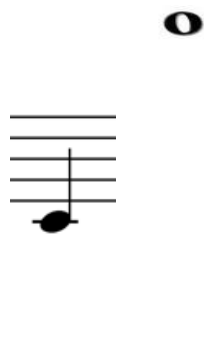
$$W+H+W+Q=$$

W – Whole note

Q – Quarter note

H – Half note

Match each musical sign with its description by drawing lines



- MIDDLE C NOTE
- TREBLE CLEF
- HALF NOTE
- QUARTER NOTE
- MEASURE
- WHOLE NOTE

